



MDG/MDY250A

Non-Insulated Type Diode Module

Features

Isolated mounting base 2500V
 Compact structure and light weight savings
 Full crimping structure, super temperature characteristics and power cycle capability

| | |
|-------------------|-----------------------|
| $I_{F(AV)}$ | 250A |
| V_{DRM}/V_{RRM} | 400-2600 V |
| I_{TSM} | 9.8KA |
| I^2T | 490 KA ² S |

Application

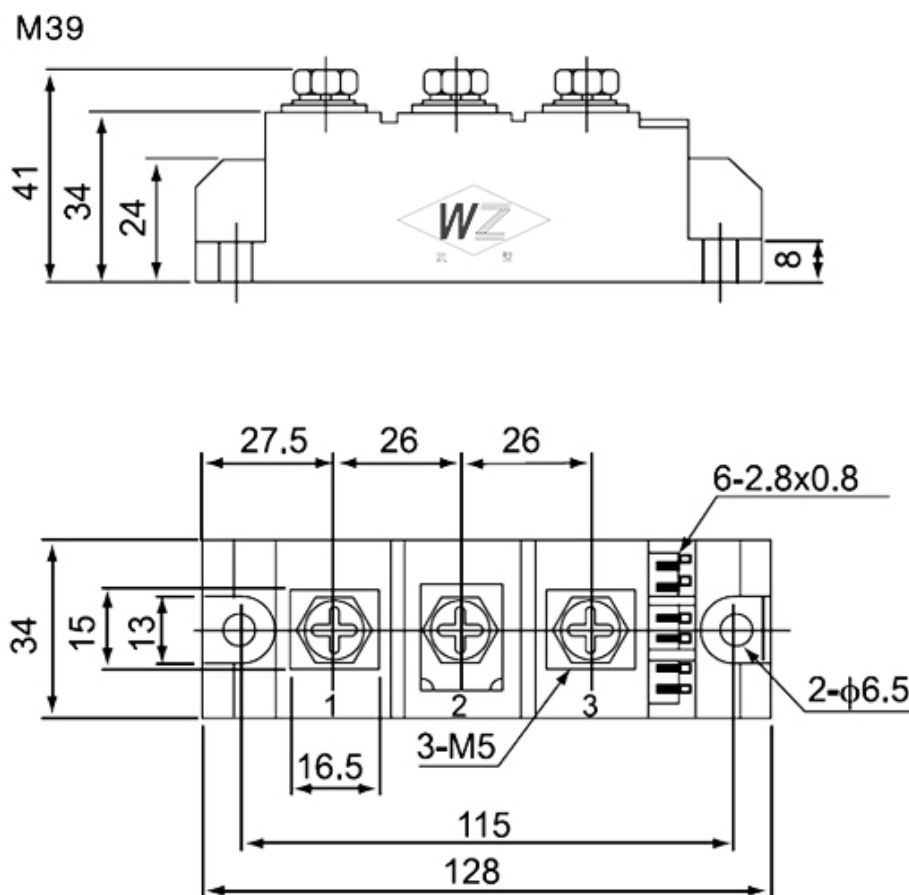
AC/DC Motor Control
 Various rectifying power suppliers
 Industry Heating Regulation
 Light Dimming
 Contactless Switches
 Motor Soft Start
 Static Var Compensation/SVR
 Welding Device
 Converter
 UPS Power Supplies
 Battery Charge and Discharge

| Symb. | | parameter | Test Conditions | $T_{J(c)}$ | Value | Unit |
|-----------------|--------------|------------------------------------------|------------------------------------------------------------------------|------------|----------|-------------------|
| Current Ratings | $I_{F(AV)}$ | average on-state current | 180° half sine wave 50Hz Single side cooled $T_c=100^\circ\text{C}$ | 140 | 250 | A |
| | $I_{F(RMS)}$ | RMS on-state current | | 140 | 393 | A |
| | I_{FSM} | Surge on-state current | 10ms half sine wave $V_R=0.6V_{RRM}$ | 140 | 9.8 | KA |
| | I^2t | I ² T for fusing coordination | | 140 | 490 | KA ² S |
| Characteristics | V_{RRM} | Repetitive peak reverse voltage | V_{RRM} tp=10ms $V_{RSM}=V_{RRM}+200V$ | 140 | 400-2600 | V |
| | I_{RRM} | Repetitive peak reverse current | at V_{RRM} | 140 | Max.12 | mA |
| | V_{FO} | Threshold voltage | | 140 | Max.0.80 | V |
| | V_{FM} | Peak on-state voltage | $I_{FM}=750A$ | 25 | Max.1.53 | V |
| | r_F | On-state slop resistance | | 140 | Max.0.87 | mΩ |

Thermal & Mechanical Data

| Symb. | parameter | Test Conditions | Value | Unit |
|---------------|--------------------------------------|-----------------------------------------|-----------|------|
| $R_{th(j-c)}$ | Thermal resistance Junction to case | single side cooled | Max.0.150 | °C/W |
| $R_{th(c-h)}$ | Thermal resistance case to heat sink | single side cooled, 180 °half sine wave | Min.0.1 | °C/W |
| F_m | Thermal connection torque(M5) | | Typ.12.0 | N m |
| | Mounting force (M6) | | Typ.6.0 | N m |
| T_{stg} | Stored temperature | | -40+125 | °C |
| W_t | Weight | | 680 | g |

Outline:



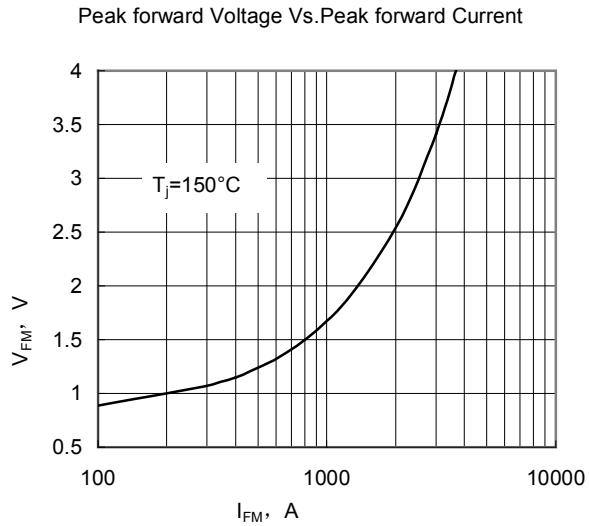


Fig.1

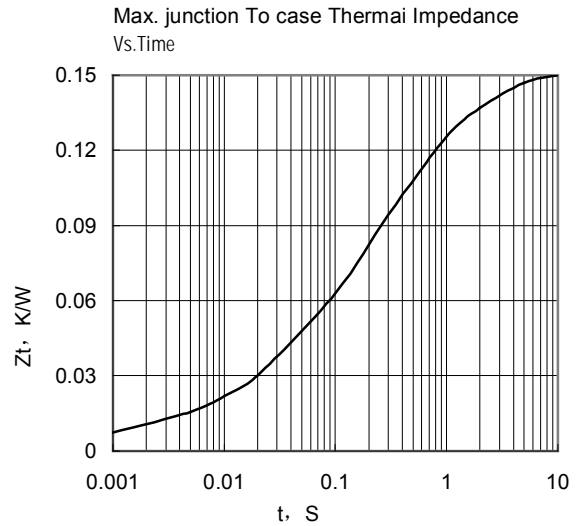


Fig.2

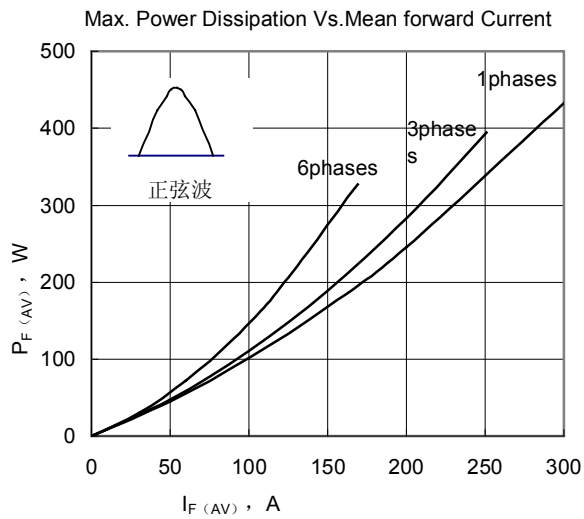


Fig.3

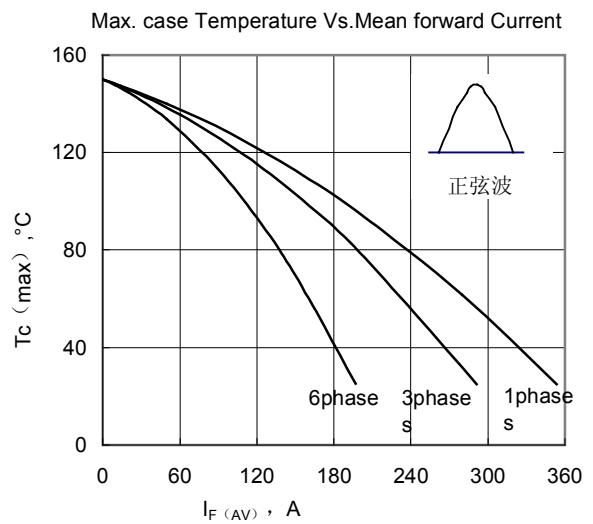


Fig.4

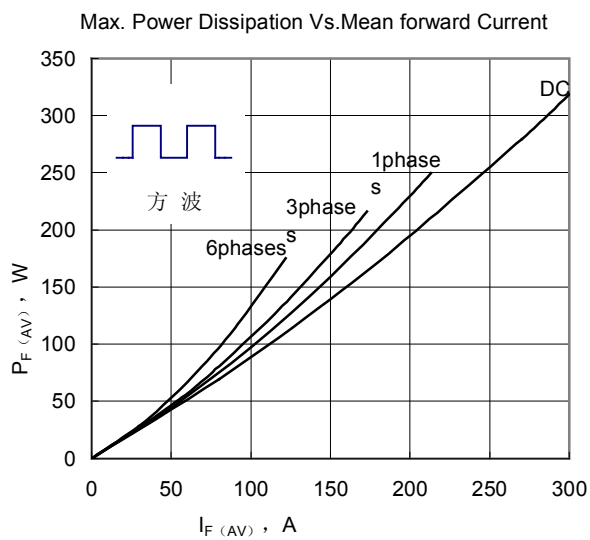


Fig.5

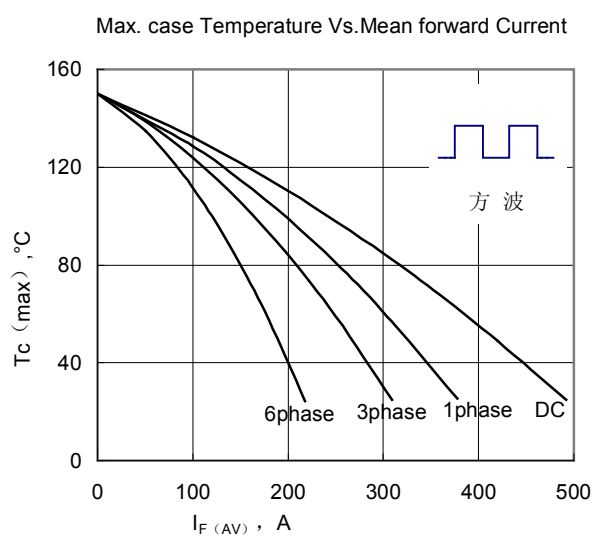


Fig.6

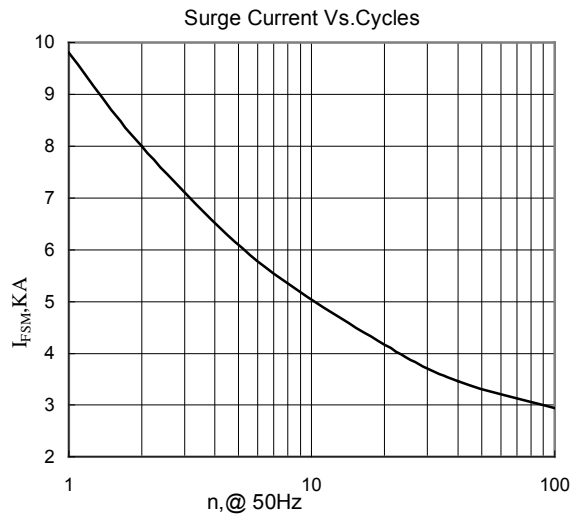


Fig.7

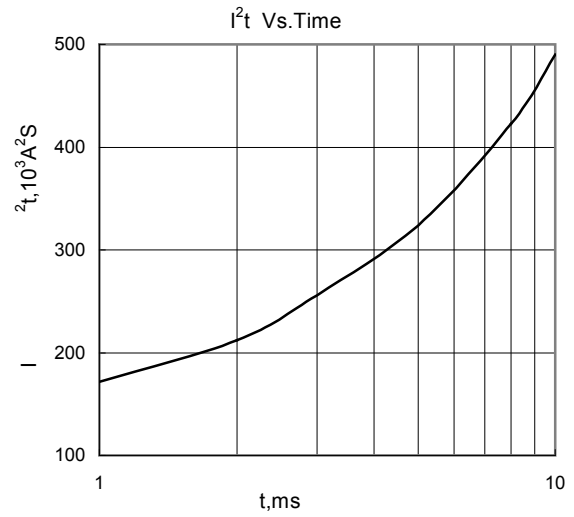


Fig.8

Wuhan Wuzheng Rectifier Co., Ltd

Add: NO. 73 Gaoxin Five Road, East Lake New Technology Development Zone, Wuhan City, Hubei province.

Tel : 86-27-87001995

Fax: 86-27-87180920

Email: info@techele.com

Web: www.techele.com/en

cn-techele.en.alibaba.com