

# ZP200A-C



## STANDARD RECOVERY DIODE

### Features

Low forward voltage drop  
Soft recovery  
Hermetic metal cases with ceramic insulators

### Application

Inverters and choppers  
AC. motor control  
Snubber and free-wheeling diodes

$I_{F(AV)}$	200A
$V_{RRM}$	1100-2000V
$I_{FSM}$	2.8KA
$I^2t$	40 KA <sup>2</sup> S

SYMBOL		PARAMETERS	TESTING CONDITION	$T_j(^{\circ}C)$	VALUES	UNIT
<b>Current Ratings</b>	$I_{F(AV)}$	average forward current	180° half sine wave 50Hz Double side cooled, $T_{hs}=129^{\circ}C$	150	200	A
	$I_{F(AV)}$	average forward current	180° half sine wave 50Hz Double side cooled, $T_{hs}=55^{\circ}C$	150	560	A
	$I_{FSM}$	Surge forward current	10ms half sine wave	150	2.8	KA
	$I^2t$	$I^2t$ for fusing coordination	$V_R=0.6V_{RRM}$	150	40	KA <sup>2</sup> S
<b>Characteristics</b>	$V_{RRM}$	Repetitive peak reverse voltage	$V_{RRM} t_p=10ms$ $V_{RSM}=V_{RRM}+100V$	150	Min.1100 Max.2000	V
	$I_{RRM}$	Repetitive peak current	$V_{RM}=V_{RRM}$	150	Max.16	Ma
	$V_{FM}$	Peak on-state voltage	$I_{TM}=600A, F=5.0KN$	25	Max.1.8	V
	$V_{FO}$	Threshold voltage		150	Max.0.70	V
	$r_F$	Forward slop resistance			Max.0.86	mΩ
	$I_{rm}$	Reverse recovery current	$I_{TM}=600A, t_p=1000\mu s,$ $di/dt=-20A/\mu s, V_r=50V$	100	Max.74.8	A
	$t_{rr}$	Reverse recovery time			Max.4.0	μs
$Q_{rr}$	Recovery charge	Max.159.7			μc	
<b>Thermal &amp; Mechanical Data</b>	$R_{th(j-h)}$	Thermal resistance Junction to heat sink	At 180° sine, double side cooled mounting force 5.0KN		Max.0.090	°C/W
	$F_m$	Mounting force			3.3 -5.5	KN
	$T_{stg}$	Stored temperature			-40-160	°C
	$W_t$	Weight			50	g

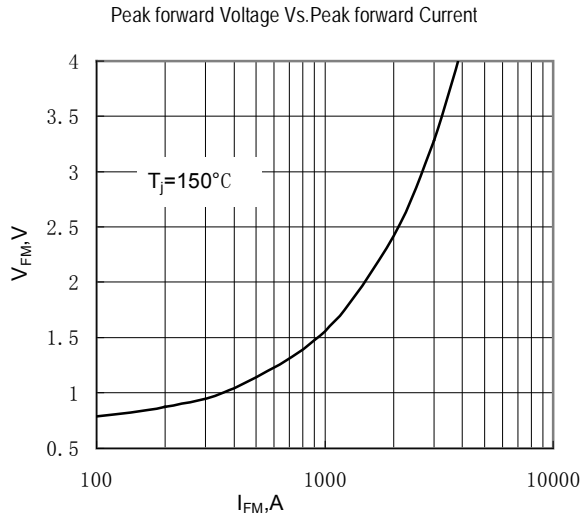


Fig.1

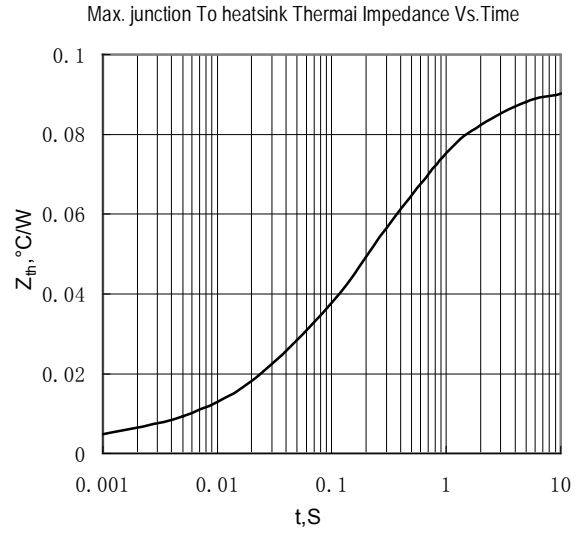


Fig.2

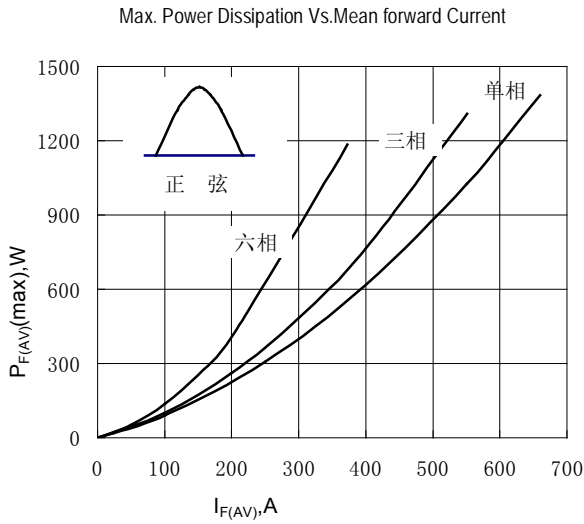


Fig.3

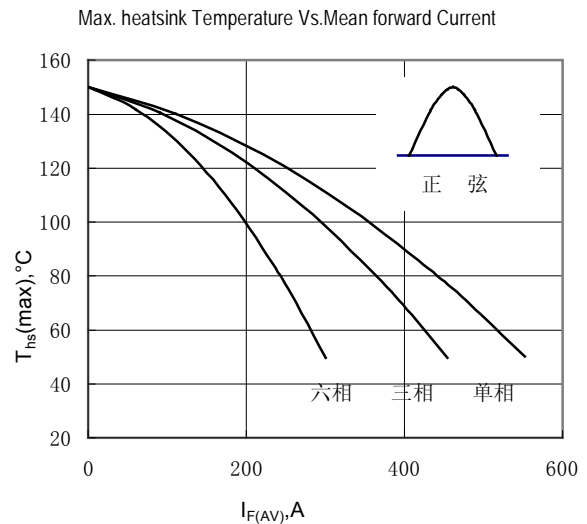


Fig.4

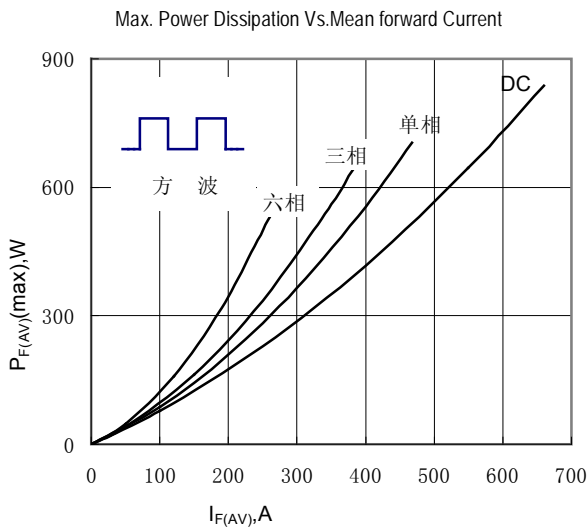


Fig.5

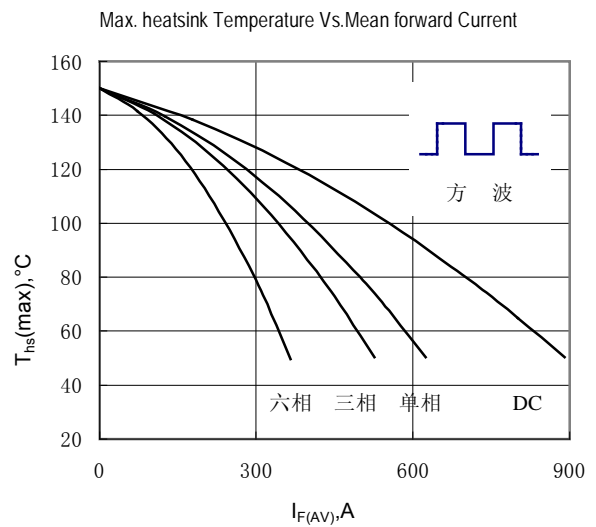
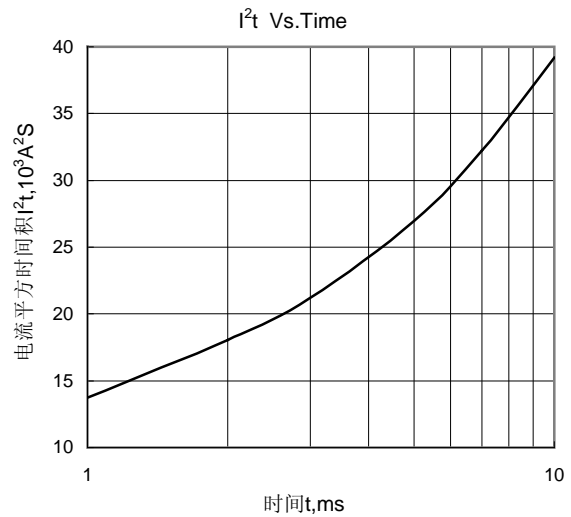
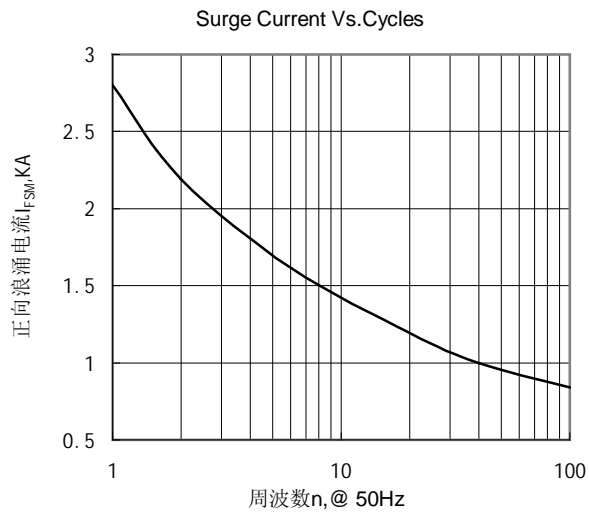
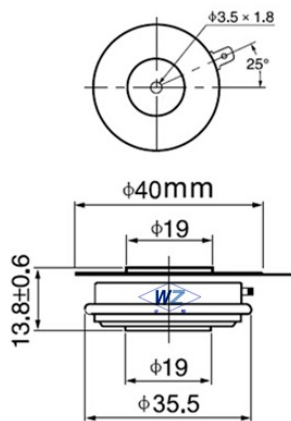


Fig.6

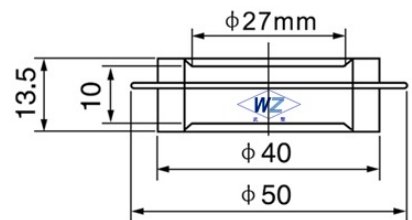


Фко gпуkpu<

C7



C2



## Wuhan Wuzheng Rectifier Co., Ltd

**Add:** NO. 73 Gaoxin Five Road, East Lake New Technology Development Zone, Wuhan City, Hubei province.

**Tel :** 86-27-87001995

**Fax:** 86-27-87180920

**Email:** info@techele.com

**Web:** www.techele.com/en

cn-techele.en.alibaba.com