



# ZP1200A-B STANDARD RECOVERY DIODE

## Features

- Low forward voltage drop
- Soft recovery
- Hermetic metal cases with ceramic insulators

## Application

- Inverters and choppers
- AC. motor control
- Snubber and free-wheeling diodes

|             |                       |
|-------------|-----------------------|
| $I_{F(AV)}$ | 1200A                 |
| $V_{RRM}$   | 200-1000V             |
| $I_{FSM}$   | 17KA                  |
| $I^2t$      | 1500KA <sup>2</sup> S |

| SYMBOL                                      |                 | PARAMETERS                                  | TESTING CONDITION   | $T_j(^{\circ}C)$ | VALUES    | UNIT              |
|---|-----------------|---|---|------------------|-----------|-------------------|
| <b>Current<br/>Tatings</b>                  | $I_{F(AV)}$     | average forward current                     | 180° half sine wave 50Hz<br>Double side cooled, $T_{hs}=106^{\circ}C$ | 150              | 1200      | A                 |
|   | $I_{F(AV)}$     | average forward current                     | 180° half sine wave 50Hz<br>Double side cooled, $T_{hs}=55^{\circ}C$  | 150              | 2106      | A                 |
|   | $I_{FSM}$       | Surge forward current                       | 10ms half sine wave   | 150              | 17        | KA                |
|   | $I^2t$          | $I^2t$ for fusing coordination              | $V_R=0.6V_{RRM}$  | 150              | 1500      | KA <sup>2</sup> S |
| <b>Characteristics</b>                      | $V_{RRM}$       | Repetitive peak reverse voltage             | $V_{RRM} t_p=10ms$<br>$V_{RSM}=V_{RRM}+100V$                          | 150              | 200-1000  | V                 |
|   | $I_{RRM}$       | Repetitive peak current                     | $V_{RM}=V_{RRM}$  | 150              | Max.60    | Ma                |
|   | $V_{FM}$        | Peak on-state voltage                       | $I_{TM}=3000A, F=21KN$  | 25               | Max.2.0   | V                 |
|   | $V_{FO}$        | Threshold voltage                           |   | 150              | Max.0.82  | V                 |
|   | $r_F$           | Forward slop resistance                     |   |                  | Max.0.132 | mΩ                |
|   | $I_{TM}$        | Reverse recovery current                    | $I_{TM}=1000A, t_p=1000\mu s,$<br>$di/dt=-20A/\mu s, V_r=50V$         | 100              | Max.128   | A                 |
|   | $t_{rr}$        | Reverse recovery time                       |   |                  | Max.4.9   | μs                |
| $Q_{rr}$                                    | Recovery charge | Max.313                                     |   |                  | μc        |                   |
| <b>Thermal<br/>&amp;Mechanical<br/>Date</b> | $R_{th(j-h)}$   | Thermal resistance<br>Junction to heat sink | At 180° sine, double side cooled<br>mounting force 21KN               |                  | Max.0.030 | °C/W              |
|   | $F_m$           | Mounting force                              |   |                  | 18-25     | KN                |
|   | $T_{stg}$       | Stored temperature                          |   |                  | -40-160   | °C                |
|   | $W_t$           | Weight                                      |   |                  | 400       | g                 |

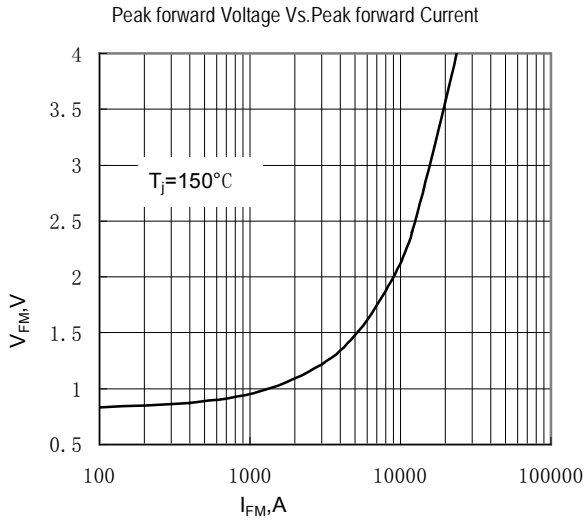


Fig.1

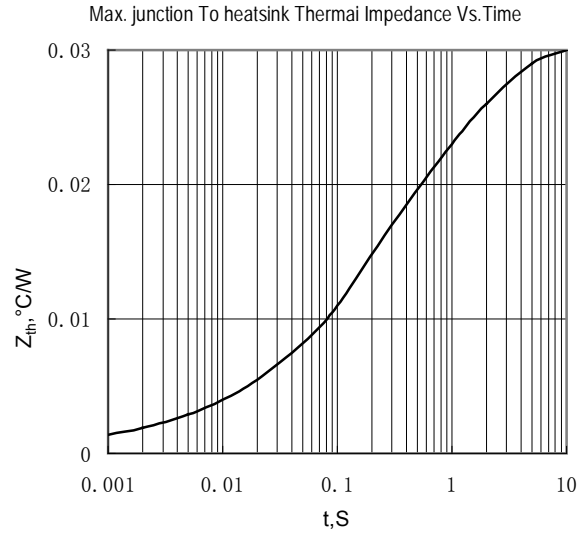


Fig.2

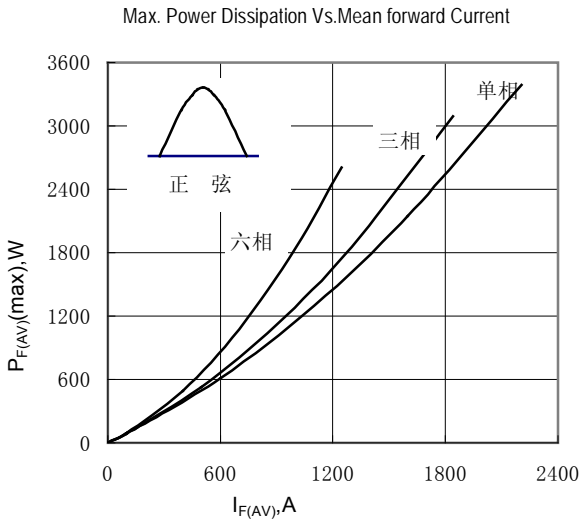


Fig.3

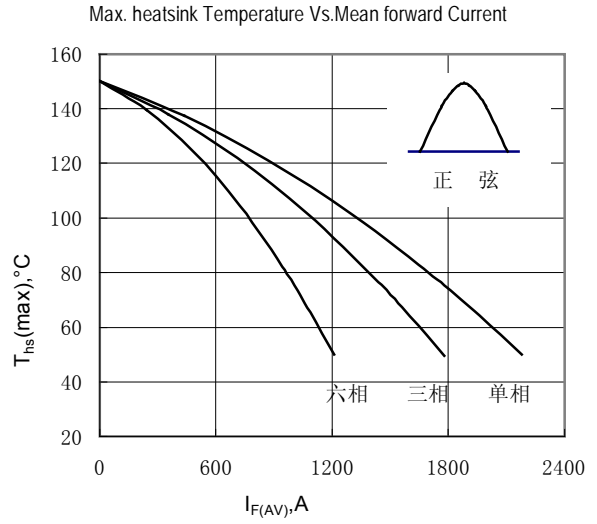


Fig.4

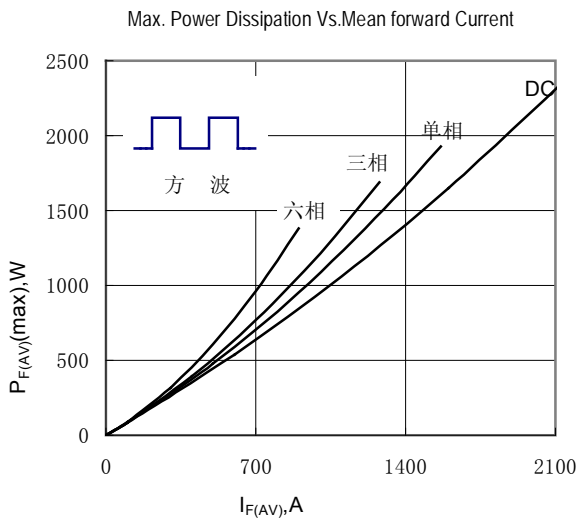


Fig.5

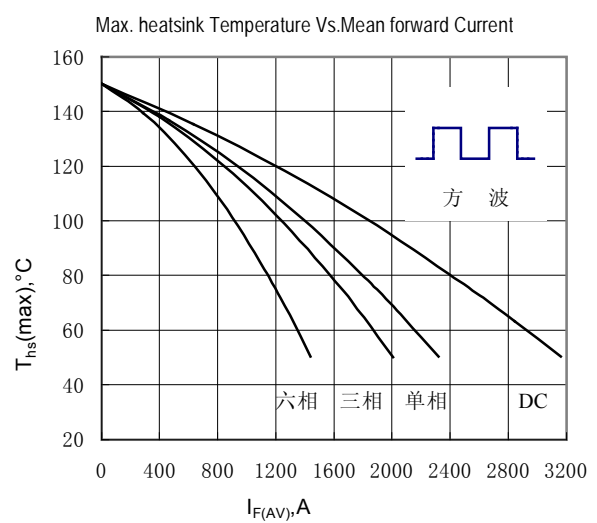


Fig.6

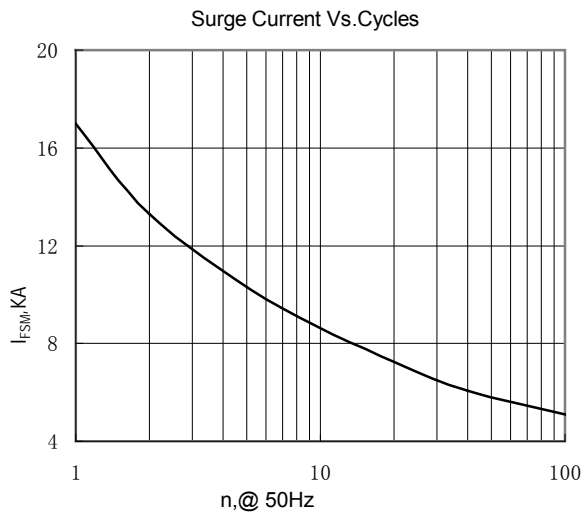


Fig.7

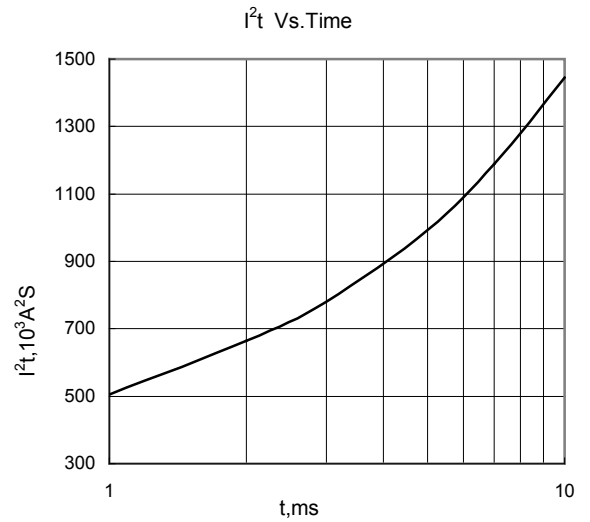
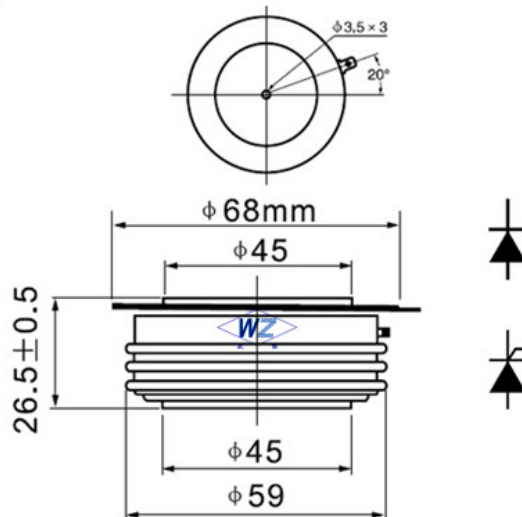


Fig.8

Dimensions:

C19



## Wuhan Wuzheng Rectifier Co., Ltd

**Add:** NO. 73 Gaoxin Five Road, East Lake New Technology Development Zone, Wuhan City, Hubei province.

**Tel :** 86-27-87001995

**Fax:** 86-27-87180920

**Email:** info@techele.com

**Web:** www.techele.com/en

cn-techele.en.alibaba.com